



AMBLYTECH®

The sustainable option for management of spider mites.

PRODUCT SPECS

Active Agent *Amblyseius (Neoseilus) californicus*
Agent Type Predatory Mite

PRODUCT USES

Spider mites

Adult and nymphal stages of the predatory mites actively search for their prey and suck them dry.

BIOLOGY

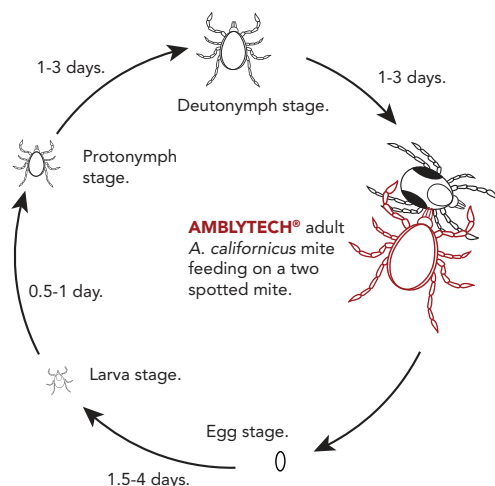
AMBLYTECH® contains *A. californicus* (also called *Neoseilus californicus*) adults, which are specialised predatory mites which feed on two spotted mites in all lifecycle stages. *A. californicus* adults are approximately 0.1 mm long and are translucent with colours ranging from pale orange to peach. The nymphs resemble the adults except that they are smaller and cannot re-produce. Eggs are oblong, transparent and white to dirty white in colour. Adult females are slightly larger than males and more oval in shape. *A. californicus* populations have slightly more females than males (66% female).

ACTION AND LIFECYCLE

A. californicus predatory adults actively hunt for two spotted mites and suck them dry. The adult predatory mite lives up to 20 days and on average eat 1-2 eggs, 1-2 nymphs or 1 adult, per day. They can also survive for short periods while feeding on pollen, making it well suited to preventative regimens.

The females can lay up to 4 eggs per day, with an average of 43 eggs over their life cycle. Eggs are laid on the leaf hairs along the veins, and on the lower surface of the leaves. Larvas hatch from the eggs within 4 days. The larvae live for 0.5-1 days. After developing into the nymph stages (protonymph and deutonymph), the mites live for up to 6 days before developing into adults. The entire life cycle takes 4-12 days at a temperature of 21°C.

AMBLYTECH® DEVELOPMENT AND ACTION



Rated at a temperature of 21°C.

INTRODUCTION METHOD

AMBLYTECH® is applied by sprinkling gently onto the crop. Hold the container in a horizontal position and rotate it gently to evenly mix the predators with the carrier material. Sprinkle the contents of the container on to the foliage.

RATE SCHED.

	Dosage per m ²	Interval (days)	Frequency	PHI & REI
Preventative	25	14	-	0
Light Curative	100	7	3x	
Heavy Curative	200	5-7	5x	

ADVANTAGES OF AMBLYTECH®

- › **AMBLYTECH®** is complementary to **PHYTOTECH®**.
- › Can survive without any food for long periods – preventative application ideal.
- › Long term control of various species of pest mites.
- › All natural non-GMO product.
- › Can be used on both in-door and out-door crops.
- › Good at controlling low populations of mites.
- › Can survive under a wide range of climatic conditions.

BEST PRACTICE ADVICE

- › Use **AMBLYTECH®** to manage pest populations preventatively by targeting pests early in the season.
- › Micro-humidity should be above 60% and temperature during the day should be around 21°C.
- › Avoid overhead irrigation for at least 24 hours after application.
- › Avoid using incompatible pesticides with this product.

STORAGE

Storage temp.	8-12°C
Conditions	Dark and dry
Max storage time	1-2 days

Do not freeze. Store horizontally in original unopened container.

PACKAGING

Predatory mites as packed	
Quantity	Pack Size
25,000	400ml



IPM ADVICE

Before introducing **AMBLYTECH®** to your crop it is important that the plant is clean of negative chemical residues. Please consult the Dudutech SIDE EFFECT GUIDE on dudutech.com for compatible chemicals.