



# BEAUVITECH® WP

**BEAUVITECH® WP** is a biological insecticide used to control Thrips, whiteflies and other soft bodied insects.

## PRODUCT SPECS

Active Agent *Beauveria bassiana* J25  
Agent Type Insect-killing fungus

## PRODUCT USES

Thrips  
Whiteflies

**BEAUVITECH® WP** kills the insect by mechanical damage (resulting from tissue invasion), depletion of nutrients and release of toxins.

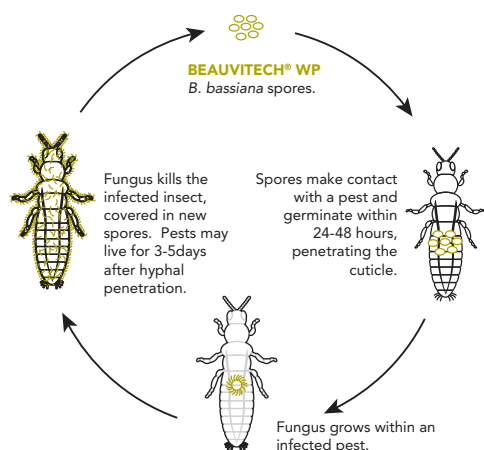
## BIOLOGY

**BEAUVITECH® WP** contains spores of *Beauveria bassiana* J25, a fungus which kills Thrips and whiteflies through an entomopathogenic process.

## MODE OF ACTION

- Attachment – Spores of *B. bassiana* attach to the insect body and germinate.
- Penetration – Fungal hyphae through enzymatic action break the insect cuticle and penetrate the insect body.
- Multiplication – The fungus obtains nutrients from the insect and multiplies inside the insect, destroying internal tissues.
- Death – The insect reduces its feeding and mobility and eventually dies after 3 – 5 days, depending on insect species, age and conidial dose.
- Spore emergence – After insect death, spores emerge through the cuticle forming a white covering around the insect cadaver.

## BEAUVITECH® WP LIFE-CYCLE AND ACTION



## ADVANTAGES OF BEAUVITECH® WP

- Highly effective against a wide variety of soft bodied pests.
- Self propagates in the field.
- No resistance development and phytotoxicity.
- Zero re-entry and zero post-harvest interval.
- Safe to the environment, users and beneficial organisms.
- Can be tank mixed with most insecticides and miticides
- Fits in with the conventional chemical application techniques and does not require special equipment.

## INTRODUCTION METHOD

**BEAUVITECH® WP** is applied as a foliar spray:

- Mix **BEAUVITECH® WP** with water at a rate of 2L per 250g product; stir well to form a uniform suspension.
- Add the suspension to the required volume of water in the spray tank and mix well.
- Add the required amount of an appropriate wetter at recommended rates and mix thoroughly (Information on the appropriate wetter may be obtained from Dudutech).
- After mixing with water, the product should be sprayed as soon as possible; DO NOT store overnight.

## BEST PRACTICE

- Apply using high volume spray equipment to thoroughly cover affected leaves.
- Best results will be achieved when applications are done late afternoon. Avoid spraying between 11am and 4pm when the UV light concentration is high and the relative humidity is low, as these factors affect **BEAUVITECH® WP** spore germination.
- Relative humidity of above 70% and temperature between 18 - 30°C are essential for spore germination and infection.
- Avoid incompatible pesticides for least 12 hours before and after application.

## RATE SCHEDULE

	Dosage g/Ha*	Interval (days)	PHI & REI
Preventative	250	14	0
Light/Medium Curative	250	7	
Heavy Curative	250	5-7	

\*per 500-1000L water.

## STORAGE

Storage temp.	10-20°C
Conditions	Dark and dry
Max storage time	6 months

Do not freeze. Store in original unopened container.

## PACKAGING

Beneficial Fungi as packed	
Quantity	Pack Size
1.0 x 10 <sup>10</sup> CFU	per 250g gram in an inert carrier



## IPM ADVICE

Before introducing **BEAUVITECH® WP** to your crop it is important that the plant is clean of negative chemical residues. Please consult the Dudutech SIDE EFFECT GUIDE on [dudutech.com](http://dudutech.com) for compatible chemicals.

If there are any questions about the product, please contact a Dudutech specialist in your area.

**BEAUVITECH® WP** is a registered trademark of Dudutech Kenya.