



# PHYTOTECH®

**PHYTOTECH®** is a biological solution for control of two spotted mites.

## PRODUCT SPECS

Active Agent *Phytoseiulus persimilis*  
Agent Type Predatory Mite

## PRODUCT USES

Two-spotted mite *Tetranychus urticae*

**PHYTOTECH®** controls two-spotted mites by feeding on mite eggs, nymphs and adults.

## BIOLOGY

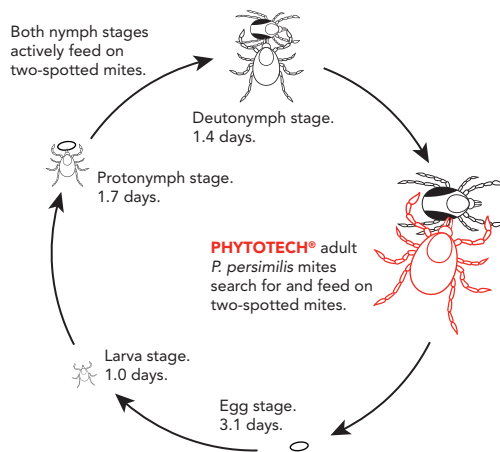
**PHYTOTECH®** contains *Phytoseiulus persimilis*, a predatory mite used in the management of the two-spotted mites (*Tetranychus urticae*). **PHYTOTECH®** is a highly specialised predator which feeds on eggs, nymphs and adult two-spotted mites.

The predators are found within mite populations where they feed, reproduce, and complete their development. Both adults and immature predators move rapidly to seek and feed on two-spotted mites. Unlike its prey, **PHYTOTECH®** does not spin a web.

## MODE OF ACTION

**PHYTOTECH®** nymphs (protonymph and deutonymph) and adults actively search for and feed on two-spotted mite adults, nymphs and eggs. Adult two-spotted mites change colour from brick red to black after being eaten and can be identified as small black shells on the leaf.

## PHYTOTECH® LIFE-CYCLE AND ACTION



## ADVANTAGES OF PHYTOTECH®

- › No resistance development.
- › No phytotoxicity.
- › Zero REI and zero PHI.
- › Non GMO.
- › Predates on all stages of red spider mites.
- › Can easily penetrate mite webs.
- › Active all year round – does not diapause during cold periods.
- › Safe to the applicator and environment.

## INTRODUCTION METHOD

- › Hold the bottle horizontally and gently rotate it to ensure even distribution of **PHYTOTECH®** in the carrier material.
- › Sprinkle over the crop gently, aiming for areas of high pest presence.
- › Use entire pack contents.

## RATE SCHED.

	Dosage per m <sup>2</sup>	Interval (days)	Frequency	PHI & REI
Preventative	20	14	-	0
Light Curative	50	7	3x	
Heavy Curative	100	5-7	5x	

## BEST PRACTICE ADVICE

- › **PHYTOTECH®** should be applied under relatively mild temperatures to help them move freely and find safe hiding places within the crop.
- › **PHYTOTECH®** should be applied as soon as two-spotted mites are noticed on the crop.
- › **PHYTOTECH®** establishes most effectively when relative humidity is above 75% and temperatures are between 15°C and 20°C.
- › Avoid overhead irrigation for at least 24 hours after application.
- › Avoid using this product with incompatible pesticides.

## STORAGE

Storage temp.	8-12°C
Conditions	Dark and dry
Max storage time	1-2 days

Do not freeze. Store horizontally in original unopened container.

## PACKAGING

Predatory mites as packed	
Quantity	Pack Size
10,000	250ml

## IPM ADVICE

Before introducing **PHYTOTECH®** to your crop it is important that the plant is clean of negative chemical residues. Please consult the Dudutech SIDE EFFECT GUIDE on [dudutech.com](http://dudutech.com) for compatible chemicals.



If there are any questions about the product, please contact a Dudutech specialist in your area.

**PHYTOTECH®** is a registered trademark of Dudutech Kenya.