

TRICHOTECH® WP

TRICHOTECH® WP is a biological solution for control of soil pathogenic fungi and a boost to crop development.

PRODUCT SPECS

Active Agent *Trichoderma asperellum* H22
Agent Type Antagonistic Fungi

PRODUCT USES

Plant vigor. Solubilisation of nutrients
Soil pathogenic fungi: *Fusarium spp.*, *Pythium spp.*,
Rhizoctonia spp., *Sclerotinia spp.*

TRICHOTECH® WP grows and establishes around the root zone then promotes plant growth, nutrient solubilisation and controls soil borne pathogens.

BIOLOGY

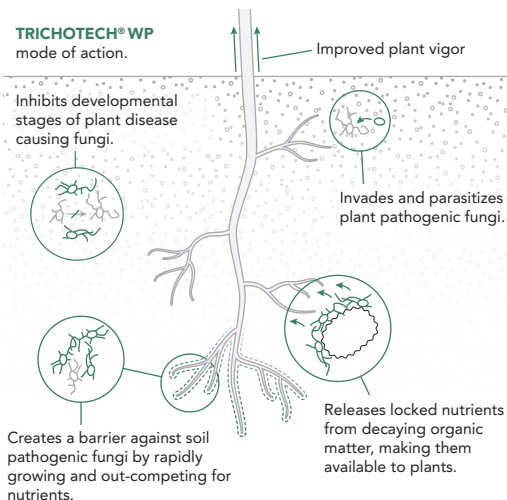
TRICHOTECH® WP contains spores of *Trichoderma asperellum* a soil dwelling fungi that is beneficial to plants. The fungus is antagonistic to soil pathogenic fungi; and has been used globally for control of soil borne fungal diseases caused by *Fusarium spp.*, *Pythium spp.*, *Rhizoctonia spp.* and *Sclerotinia spp.* In addition, the strain is known to increase plant vigour.

MODE OF ACTION

TRICHOTECH® WP mechanisms:

- › **Competition** – **TRICHOTECH® WP** is a fast growing fungus that easily out-competes soil pathogens, promoting niche exclusion of potential harmful microbes, and providing a barrier to combat disease causing fungi.
- › **Antibiosis** – **TRICHOTECH® WP** produces chemical metabolites, which inhibit various developmental stages of plant disease causing fungi.
- › **Mycoparasitism** – **TRICHOTECH® WP** produces enzymes that enable the fungus to invade and parasitize plant pathogenic fungi.
- › **Growth promotion** – **TRICHOTECH® WP** increases plant growth vigour by releasing locked nutrients from decaying organic matter; supplying nutrients to plant roots.

EFFECTS OF TRICHOTECH® WP



INTRODUCTION METHOD

TRICHOTECH® WP should be applied preventively – before diseases occur in the plants. The application recommendations vary depending on target crop and method of application:

- › **Drip:** Mix 125g/Ha **TRICHOTECH® WP** in 5L water. Add to a fertigation tank, fill to 1,500L, and apply via drip system. Stir continuously.
- › **Drench:** Dissolve 125g/Ha **TRICHOTECH® WP** in 5L water. Pour into a large container, add enough water to cover the target area, and apply evenly using a watering can or sprayer. Water the area afterwards.
- › **Dip:** Recommended for pre-transplant rooted plantlets or cuttings. Make a paste with 125g/Ha **TRICHOTECH® WP** in 20L water. Dip the roots of the transplants/cuttings in the paste and plant immediately.
- › **Seed dressing:** For 1Ha worth of seed, mix 125g **TRICHOTECH® WP** in 2L water. Stir to create a uniform suspension. Dress seeds manually or with a machine for even coverage.

RATE SCHED.	Dosage	Interval (days)	Frequency	REI* & PHI**
Maintenance	125g/Ha	30	As needed	0
Light Curative	125g/Ha	14	x4	
Then revert to maintenance.				
Medium Curative	250g/Ha	14	x2	
Heavy Curative	Drench with BACTECH then revert to Maintenance regimen			
Seed Dressing	125g/Ha of seed	At planting stage	Each season	

STORAGE

Storage temp.	8-12°C
Conditions	Dark and dry
Max storage time	6 months

Do not freeze. Store upright.

PACKAGING

Antagonistic Fungi as packed	
Quantity	Pack Size
4.0 x 10 ⁹ CFU per gram in 125g	125g
an inert carrier	

IPM ADVICE

Before introducing **TRICHOTECH® WP** to your crop it is important that the plant is clean of negative chemical residues. Please consult the Bioline AgroSciences Africa SIDE EFFECT GUIDE on Dudutech.com for compatible chemicals.

SCAN TO DOWNLOAD



If there are any questions about the product, please contact a Bioline AgroSciences Africa specialist in your area. **TRICHOTECH® WP** is a registered trademark of Bioline AgroSciences Africa.