

# TRICHOTECH® WP

**TRICHOTECH® WP is a biological solution for control of soil pathogenic fungi and a boost to crop development.**

## PRODUCT SPECS

Active Agent *Trichoderma asperellum* H22  
Agent Type Antagonistic Fungi

## PRODUCT USES

Plant vigor. Solubilisation of nutrients  
Soil pathogenic fungi: *Fusarium spp.*  
*Pythium spp.*  
*Rhizoctonia spp.*

**TRICHOTECH® WP** grows and establishes around the root zone then promotes plant growth, nutrient solubilisation and controls soil borne pathogens.

## BIOLOGY

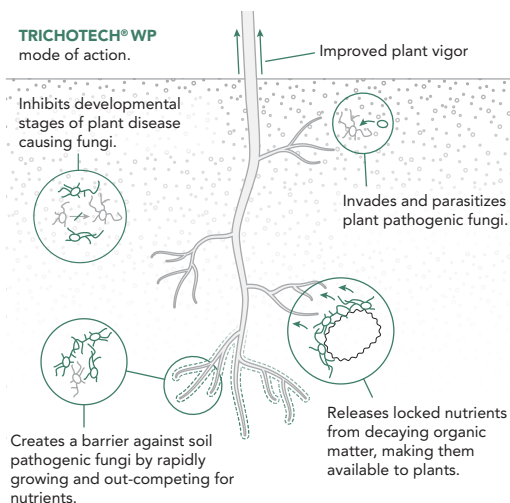
**TRICHOTECH® WP** contains spores of *Trichoderma asperellum* a soil dwelling fungi that is beneficial to plants. The fungus is antagonistic to soil pathogenic fungi; and has been used globally for control of soil borne fungal diseases caused by *Fusarium spp.*, *Pythium spp.* and *Rhizoctonia spp.* In addition, the strain is known to increase plant vigour.

## MODE OF ACTION

**TRICHOTECH® WP** mechanisms:

- › **Competition** – **TRICHOTECH® WP** is a fast growing fungus that easily out-competes soil pathogens, promoting niche exclusion of potential harmful microbes, and providing a barrier to combat disease causing fungi.
- › **Antibiosis** – **TRICHOTECH® WP** produces chemical metabolites, which inhibit various developmental stages of plant disease causing fungi.
- › **Mycoparasitism** – **TRICHOTECH® WP** produces enzymes that enable the fungus to invade and parasitize plant pathogenic fungi.
- › **Growth promotion** – **TRICHOTECH® WP** increases plant growth vigour by releasing locked nutrients from decaying organic matter; supplying nutrients to plant roots.

## EFFECTS OF TRICHOTECH® WP



## INTRODUCTION METHOD

Owing to its mode of action, **TRICHOTECH® WP** should be applied preventively – before diseases occur in the plants. The application recommendations vary depending on target crop and method of application:

- › **Drip application** – Apply 125g/Ha of **TRICHOTECH® WP**. Add 125g of **TRICHOTECH® WP** into 5 litres of water and mix thoroughly. Add the suspension into a large fertigation tank and make up the volume to 1,500L. Apply the suspension through the fertigation drip system. Agitate the mixture throughout the application period to ensure uniform distribution.
- › **Drench application** – Prepare a suspension of **TRICHOTECH® WP** at the rate of 125g/Ha in 5 litres of water and mix thoroughly. Add the mixture into a large drenching container and make up the volume of water to adequately cover the target area. Pour into a watering can or sprayer/applicator and apply evenly onto the target area. Irrigate after application.
- › **Dip application** – This is recommended as a pre-transplant application for rooted plantlets or cuttings. Prepare a paste of 125g/Ha **TRICHOTECH® WP** in 20L of water. Place rooted transplants/cuttings in a perforated crate and dip roots into the paste. Plant seedling as soon as they are dipped.

## RATE SCHED.

	Dosage g/Ha	Interval (days)	Frequency	REI* & PHI**
Maintenance	125	30	As needed	0
Light Curative	125	14	x4	
Then revert to maintenance.				
Medium Curative	250	14	x2	
Heavy Curative	Drench with <b>PRESS</b> then revert to Maintenance regimen			

## STORAGE

Storage temp.	8-12°C
Conditions	Dark and dry
Max storage time	6 months
Do not freeze. Store upright.	

## PACKAGING

Antagonistic Fungi as packed	
Quantity	Pack Size
4.0 x 10 <sup>9</sup> CFU per gram in an inert carrier	125g

## IPM ADVICE

Before introducing **TRICHOTECH® WP** to your crop it is important that the plant is clean of negative chemical residues. Please consult the Dudutech SIDE EFFECT GUIDE on [dudutech.com](http://dudutech.com) for compatible chemicals.

