



# HYPOTECH®

**HYPOTECH®** is a biological solution for the control of Thrips, shore fly, sciarid fly and fruit fly in their early stages of development.

## PRODUCT SPECS

Active Agent	<i>Hypoaspis miles</i> ( <i>Stratiolaelaps scimitus</i> )
Agent Type	Predatory Mite

## PRODUCT USES

Thrips	Shore Fly
Sciarid Fly	Fruit Fly

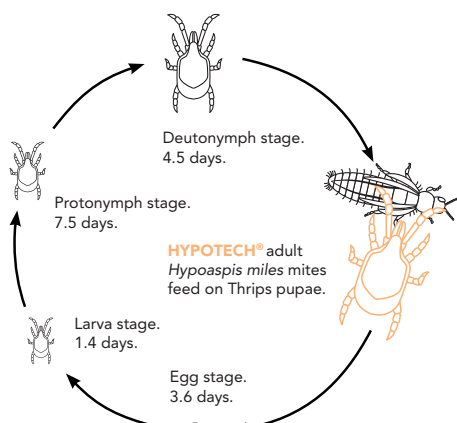
**HYPOTECH®** mites actively search for and feed on Thrips and fly pupae within the soil.

## BIOLOGY

**HYPOTECH®** contains *Hypoaspis miles* predatory mites which feed on soil-borne pupae stages of Thrips, shore fly, sciarid fly and fruit fly. *H. miles* are about 0.5-1 mm wide and normally brown in colour. The larvae and first nymph stages are white.

## HYPOTECH® LIFE-CYCLE AND ACTION

**HYPOTECH®** predatory mites move through the soil to search for and feed on the pupae. Female *H. miles* lay their eggs on damp soil. The hatched eggs will then begin to feed on organic materials. The cycle from egg to adult is 14-17 days under favourable climatic conditions of 21-25°C. The sex ratio is 50%, and therefore it is important that it is distributed as evenly as possible on the bottom. It is recommended to schedule introductory session several times.



## ADVANTAGES OF HYPOTECH®

- › **HYPOTECH®** is a natural product without chemical carriers.
- › **HYPOTECH®** is a polyphagous mite, it eats several preys.
- › **HYPOTECH®** does not hibernate.
- › No danger to humans or pets.
- › No danger to the plant.
- › No re-entry interval.
- › No post harvest interval.

## INTRODUCTION METHOD

**HYPOTECH®** is normally distributed in a natural nutrient medium either before or after planting of the crop. Mixing the *H. miles* in the substrate or growing medium is not recommended. The best results are achieved when *H. miles* is applied before the pest populations are high.

## RATE SCHED.

	Dosage per m <sup>2</sup>	Interval (days)	Frequency	PHI & REI
Preventative	100	28	1x	0
Light Curative	200	14	3x	
Heavy Curative	500	7	3x	

## VISUAL EFFECT

The mites are visible in and on the soil, where they feed themselves within the top 2cm and will also be visible around the plant base. *H. miles* will rarely be found in and on the plant. A slow but steady reduction of the infestation level will be noticed. Young mites will be found around the stakes and piles mainly where the prey resides.

An adult eats 1-5 thrips or 1-3 young sciarid larvae daily.

## BEST PRACTICE ADVICE

- › **HYPOTECH®** functions best in a greenhouse temperature between 15-30°C in a moist medium or substrate.
- › Avoid drenching with non-compatible pesticides.
- › Avoid applying in media with excessive water.
- › Avoid using incompatible pesticides.

## STORAGE

Storage temp.	12-18°C
Conditions	Dark and dry
Max storage time	1-2 days
Do not freeze. Store upright in original unopened container.	

## PACKAGING

Predatory mites as packed	
Quantity	Pack Size
15,000	1000ml
125,000	1000ml

## IPM ADVICE

Before introducing **HYPOTECH®** to your crop it is important that the plant is clean of negative chemical residues. Please consult the Dudutech SIDE EFFECT GUIDE on [dudutech.com](http://dudutech.com) for compatible chemicals.



If there are any questions about the product, please contact a Dudutech specialist in your area.

**HYPOTECH®** is a registered trademark of Dudutech Kenya.